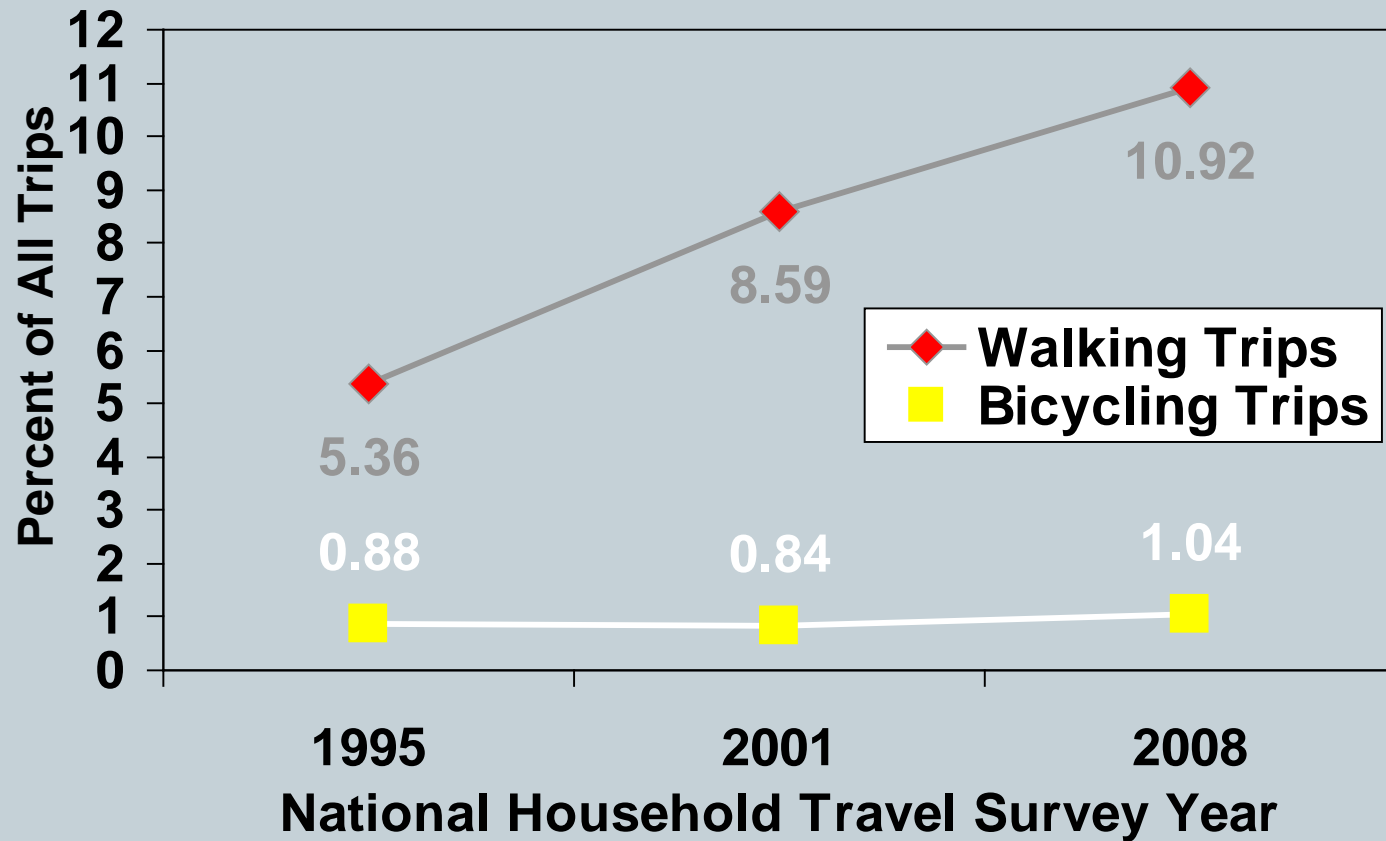


National Update on Bicycle and Pedestrian Safety Programs

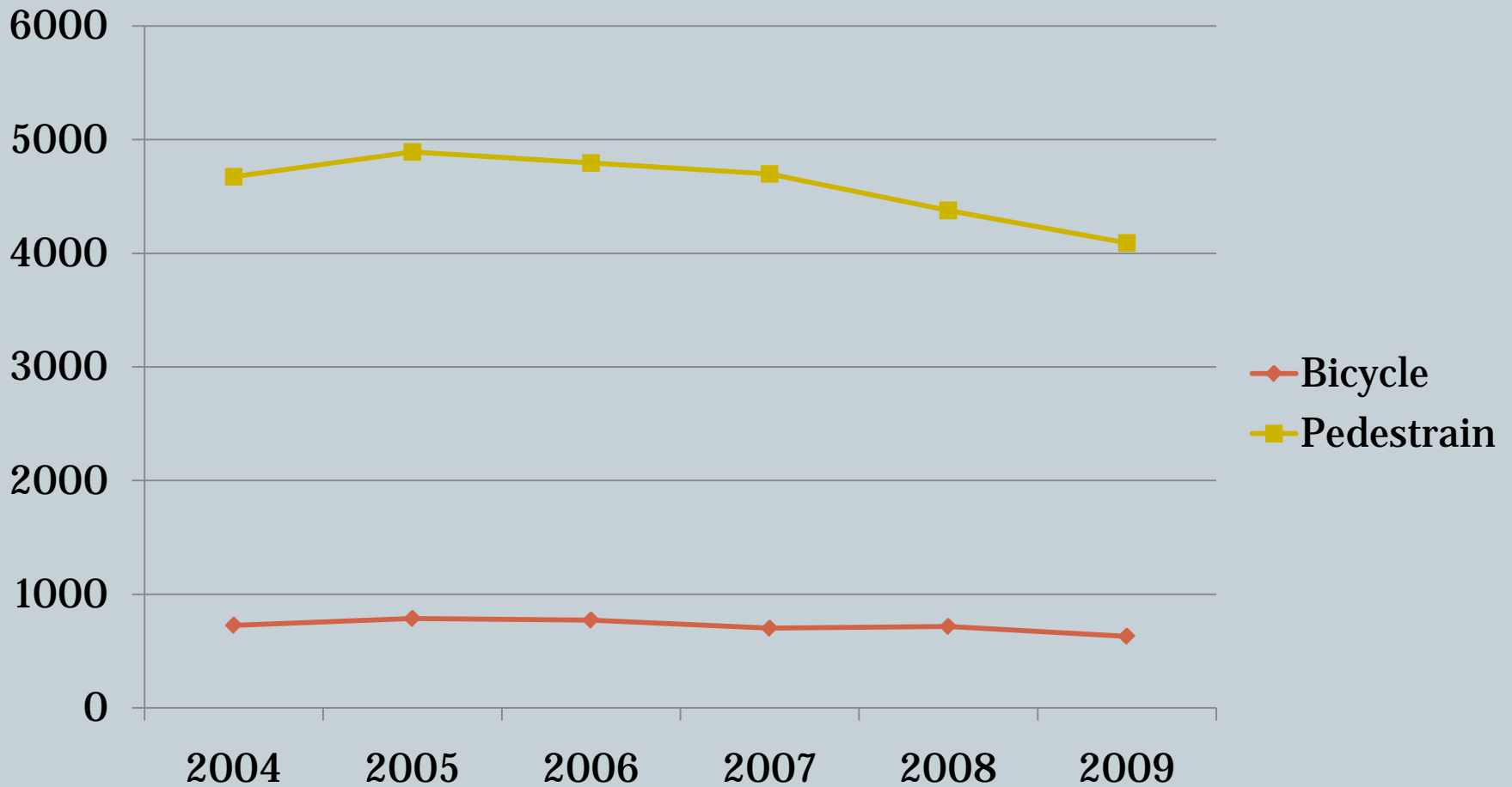


GABRIEL J, CANO
NATIONAL HIGHWAY TRAFFIC SAFETY
ADMINISTRATION
REGION 1

National Walking and Bicycling Rates



National Bicycle and Pedestrian Fatalities



Where and Who?



- **Bicyclists (2008 data)**
 - Urban, non-intersection locations between the hours of 5-9pm.
 - Male
 - Average age: 41
 - Alcohol
- **Pedestrians (2008 data)**
 - Urban, non-intersection, normal weather conditions, weekends, at night
 - Male
 - Age: 65+ and <15
 - Alcohol

Livability



- Improving transportation options for walking, bicycling, and transit so that people don't have to drive if they can't or don't want to
- There is a lot that can be learned from Europe
 - Linking bicycling trips with transit (http://international.fhwa.dot.gov/links/pub_details.cfm?id=662)
- Creation of new opportunities:
 - Planning
 - Programs
 - Interaction with local governments
 - Performance Measures (optimize funding)

HUD-DOT-EPA

Sustainable Communities Partnership



- **Guiding Principles**
 - Provide more transportation choices
 - Promote equitable, affordable housing
 - Enhance economic competitiveness
 - Target resources to existing communities
 - Coordinate and leverage federal policies and investments
 - Value unique characteristics of communities no matter their size



Snapshot of Existing Measures



- **Data Collection:**
 - Safety statistics
 - Trip rates
 - Federal funds used for projects
- **Safe Facilities:**
 - Raised medians, pedestrian countdown signals, crosswalk lighting
 - Bicycle lanes, shared lane markings, paved shoulders
- **Law Enforcement:**
 - Strategies-motorists and non-motorists
 - Training
- **Education:**
 - Target group specific

Coming Up From NHTSA: Bicycles



- **Increasing Helmet Use-Demonstration of Promising Practices to Increase Proper Helmet Use Among Youth**
 - Expected Winter 2013
- **Training Physical Education Teachers and Recreation Specialist to Teach Safe Bicycling**
 - Expected Spring 2011
- **Media Materials to Reach Adults Who Bicycle**
 - Expected Winter 2010

Coming from NHTSA: Bicycles Con't



- **Spanish Bikeability Checklist**
 - Expected Winter 2010
- **Updated Cycling Skills Clinic (Bicycle Rodeo Guide)**
 - Expected Winter 2010

Coming from NHTSA: Pedestrian



- **Demonstration and Evaluation of the Heed the Speed Pedestrian Safety Program**
 - Expected September 2010
- **Pilot Test of Strategies to Reduce Alcohol-Impaired Pedestrian Crashes**
 - Expected Spring 2011
- **Effects of High Visibility Enforcement on Driver Compliance to Pedestrian Right of Way Laws**
 - Expected February 2011
- **Identifying Countermeasure Strategies Targeting Older Pedestrians**
 - Expected July 2011

Coming from NHTSA: Pedestrian Con't



- **Updated Pedestrian Safety Curriculum for Children**
 - Expected October 2010
- **Pedestrian Safety Training for Law Enforcement**
 - Expected Winter 2010
- **Education and Enforcement in Focus City and Focus State Pedestrian Safety Efforts**
 - Expected September 2010-September 2013
- **Pedestrian Safety and Injury Prevention Partnership**
 - Expected Summer 2011

Coming from NHTSA: Pedestrian Con't



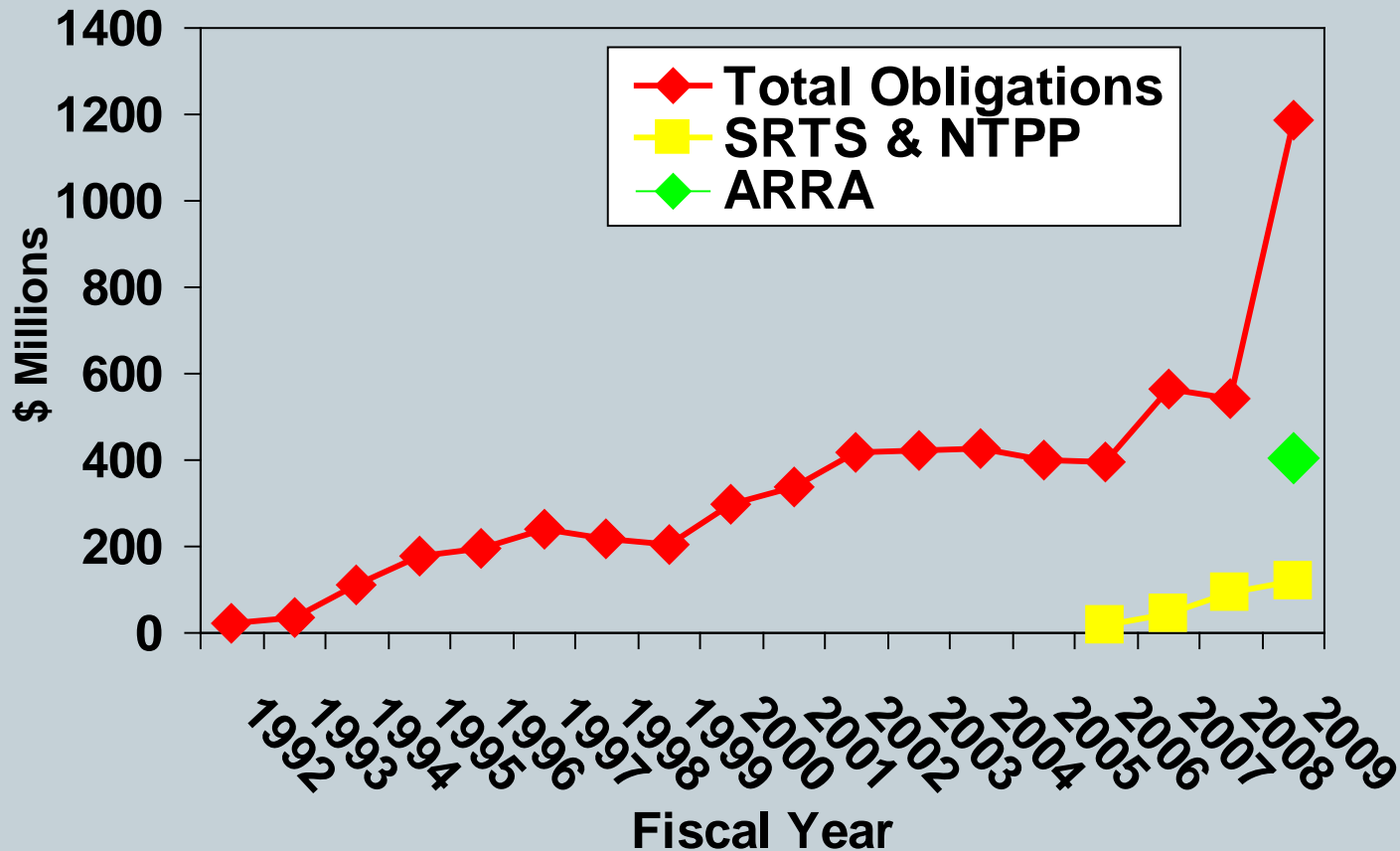
- **Older Pedestrian Safety Workshop**
 - DVD is now available
- **Residents Guide to Creating Safe and Walkable Communities**
 - Expected Winter 2011
- **Stop and Look with Willy Whistle**
 - Available now on the NHTSA website

Coming from NHTSA: Bicycle and Pedestrian



- **Pedestrian/Bike Safety Curriculum for ESL**
 - Now available on website; Spring 2010 for CD-ROM
 - Low-literacy version: expected Summer 2010
- **Traffic Safety Materials to Reach Hispanic Adult Audiences**
 - Just released-available on NHTSA website
- **Safe Routes to School**

Federal Funds Obligated for Walking and Bicycling Projects



Resources



- www.pedbikeinfo.org
- www.saferoutesinfo.org
- www.nhtsa.dot.gov
- www.fhwa.dot.gov/environment/bikeped

Questions?



- **Gabriel J. Cano**

55 Broadway

Kendall Square, RTV-8E

Cambridge, MA 02142

617-494-3427

Gabriel.cano@dot.gov